



Kitten Cup Regatta

Royal Vancouver Yacht Club
Saturday, April 20-21, 2024
Vancouver Canada

Supplementary Sailing Instructions

(In accordance with Appendix S)

1 SCHEDULE

Classes	First Warning Signal	
	Saturday	Sunday
29er, Club 420, RS Feva	1130	1100
Optimist Dinghy	1200	1130
ILCA 7, ILCA 6, ILCA 4	1130	1100

2 FLAG POLE & OFFICIAL NOTICE BOARD

The flag pole is on the north side of the main clubhouse, The official notice board is online at the event website www.royalvan.com/KittenCup.

3 SIGNALS MADE ASHORE

When flag AP is displayed ashore, '1 minute' is replaced with 'not less than 30 minutes' in Race Signals AP.

4 THE COURSES

Courses and marks are shown in Addendum A.

5 THE START

To alert boats that a race or sequence of races will begin soon, the race committee may make a series of short sound signals. This changes Appendix S.

6 CLASS FLAGS

Class flags are the class insignia on a plain background, except

ILCA 7	ILCA class insignia on a white background
ILCA 6	ILCA class insignia on a green background
ILCA 4	ILCA class insignia on a yellow background
Optimist	Optimist class insignia on a white background
Optimist Green	Optimist class insignia on a green background

7 CHANGE OF THE NEXT LEG OF THE COURSE

To change the next leg of the course, the race committee will move the original mark or the finishing line to a new position. This changes Appendix S.

8 TIME LIMITS

8.1

	Mark 1 Time Limit	Race Time Limit	Finishing Window
ILCA 7, ILCA 6, ILCA 4	20 minutes	60 minutes	15 minutes
29er	15 minutes	45 minutes	10 minutes
Club 420 & RS Feva	20 minutes	45 minutes	15 minutes
Optimist Dinghy	NA	60 minutes	NA

8.2 The Finishing Window is the time for boats to finish after the first boat sails the course and finishes. Boats failing to finish within the Finishing Window, and not subsequently retiring, penalized or given redress, will be scored Time Limit Expired (TLE) without a hearing. A boat scored TLE shall be scored points for the finishing place one more than the points scored by the last boat that finished within the Finishing Window. This changes RRS 35, A5.1, A5.2 and A10.

9 AREAS THAT ARE OBSTRUCTIONS

9.1 A line beginning at the northwest corner of the Royal Vancouver YC Jericho breakwater, through a series of orange and white can buoys ending with the north end of the most westerly pier at Jericho Sailing Centre, delimits an obstruction. Boats may not pass south of this line.

9.2 Boats may not enter City of Vancouver swim areas off Jericho Beach, Kitsilano and Spanish Banks. These are designated as an obstruction.

9.3 A line, 100 yards from barges working on the RVYC breakwater, delimits an obstruction for vessels not entering or leaving the marina using the standard channel. All vessels shall keep clear and minimize wake.

10 PROTESTS AND REQUESTS FOR REDRESS (CHANGES TO APPENDIX S)

10.1 The protest time limit is 45 minutes after the race committee signal boat returns to the harbour.

10.2 Requests for hearings are available on the online official notice board.

10.3 Scoring inquiries are available on the online official notice board.

10.4 Notices will be posted on the official notice board on the event website no later than 15 minutes after the protest time limit to inform competitors of hearings in which they are parties or named as witnesses.

10.5 A list of boats that have been penalized for breaking RRS 42 under Appendix P will be posted on the official notice board.

11 SAFETY REGULATIONS

- 11.1 A boat that retires from a race shall notify the race committee as soon as possible.
- 11.2 [DP] Boats shall not obstruct commercial traffic and must obey all warning signals and directions from commercial and race committee vessels.

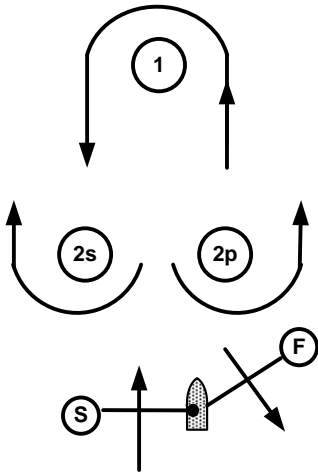
12 RADIO COMMUNICATION

The race committee will communicate with coaches and spectators during the event:

ILCA course	VHF 67
Double-handed course	VHF 68
Optimist dinghy course	VHF 69

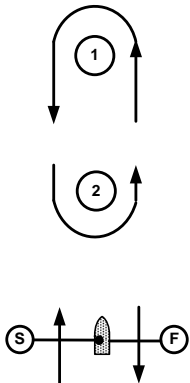
Addendum A to the Sailing Instructions

ILCA Course



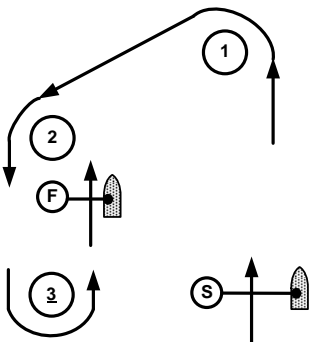
Course: Start – 1 – 2s/2p – 1 – 2s/2p - Finish	
Mark S	Black and White SmartMark At the Race Committee's discretion may be replaced with an Orange and white inflatable
Mark 1 – ILCA 7	Pink inflatable
Mark 1 – ILCA 6	Yellow inflatable
Mark 1 – ILCA 4	Green inflatable
Marks 2p & 2s	Pink inflatables
Mark F	Blue & white inflatable

29er, RS Feva and Club 420 Course



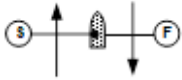
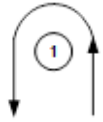
Course: Start – 1 – 2 – 1 – Finish	
Mark S	Green SmartMark At the Race Committee's discretion may be replaced with an Orange and white inflatable
Mark 1 – 29er	Yellow inflatable
Mark 1 – Others	Orange inflatable
Mark 2	Orange inflatable
Mark F	Blue & white inflatable

Optimist Dinghy Course



Course: Start – 1 – 2 – 3 – Finish	
Mark S	Orange and white inflatable
Marks 1, 2 & 3	Red inflatable
Mark F	Blue and white inflatable

Optimist Green Dinghy Course



Course: Start – 1 – Finish	
Mark S	Orange and White inflatable
Mark 1	Green inflatable
Mark F	Yellow inflatable